

Dallas Love Field
Noise **DYNAMICS**



November
2025

NOISE CORNER

♥ *Thank you for subscribing to Dallas Love Field's (DAL) Monthly Noise Dynamics. This newsletter is published for those interested in the topic of aircraft noise here at Dallas Love Field by providing useful information, monthly data, upcoming events and news.*

Residents interested in receiving our monthly noise dynamics can send an email request to AVINoise@dallas.gov.

OUTREACH AND EDUCATIONAL ACTIVITIES

If you would like the Airport Noise Monitoring Specialist to **attend neighborhood meetings, schools, or any other outreach activities** to serve as a resource on aircraft noise related concerns, please email AVINoise@dallas.gov to let us know.

HELPFUL LINKS

(Click on Icon to access link)



NOISELAB

View information regarding aviation noise and/or the Voluntary Noise Program. NoiseLab allows you to obtain reports, view runway closures and access archived documents such as: Noise Stakeholder presentations, annual DNL contour reports, and newsletters.

(●) FLIGHT TRACKER - DAL

Understand aircraft flight pattern, self-investigate aircraft events and submit noise concerns.

(●) FLIGHT TRACKER - DEA

Access Dallas Executive Airport's Flight Tracker.

▶ YOUTUBE - FLIGHT TRACKER

A demonstration of the Flight Tracker.

▶ YOUTUBE - DAL AIR TRAFFIC OPERATIONS BY FAA

An overview of the National Airspace System around the DFW Metroplex.

NOISE FACTS

There are several environmental factors that can influence how efficient an aircraft operates and how noise is perceived.

Topography



Sound can be refracted and absorbed when traveling through diverse terrain and structures.

Clouds



The bottom of clouds can rebound aircraft noise down towards the earth's surface.

Wind



On windy days, aircraft noise is carried further at ground level.

High Temperatures



Aircraft climb slower in warm weather, making operations louder on the ground.

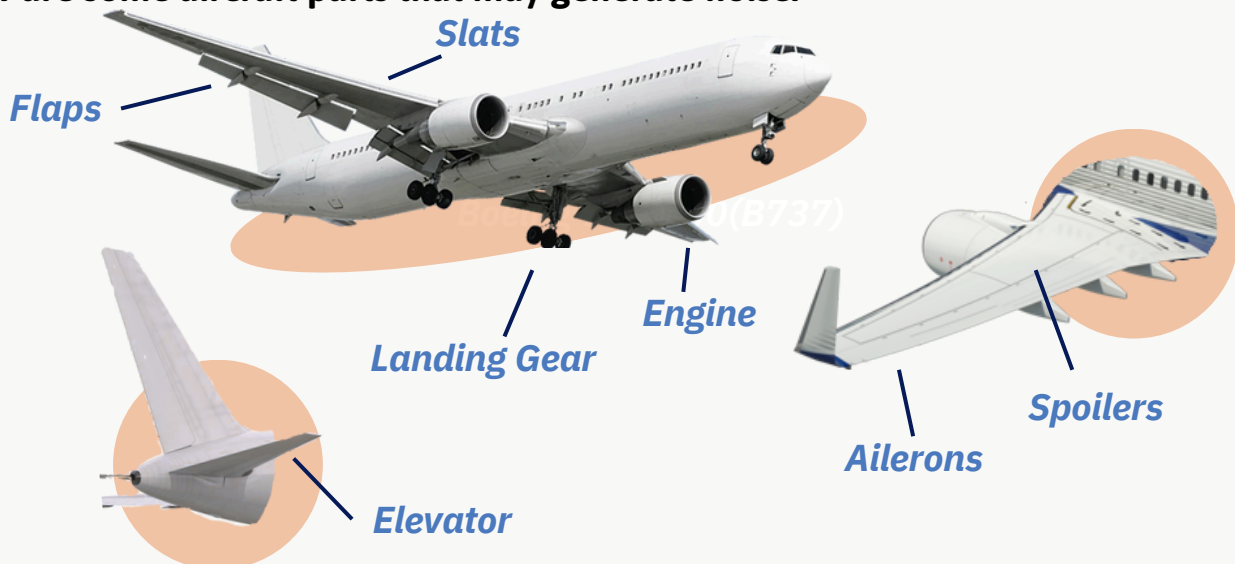
Cold Temperatures



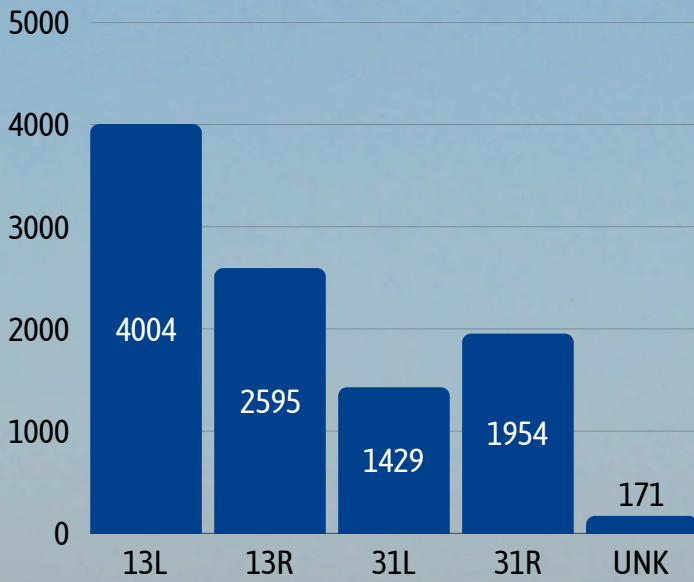
Air becomes denser in cooler temperatures causing aircraft to have a faster rate of climb, reducing noise.

AIRCRAFT NOISE

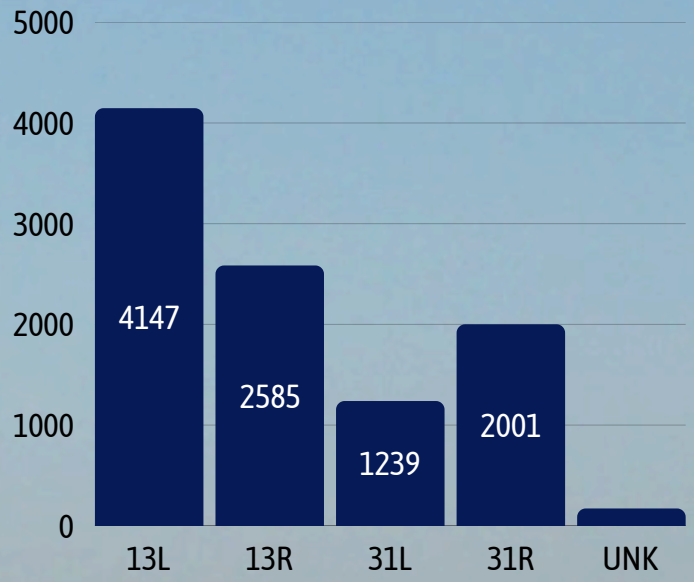
The aircraft type, aerodynamics, and phase of flight contributes to aircraft noise levels. During take-off, the engines generate the most disturbance. In descent, the noise derives from landing mechanisms that increase drag, such as landing gear, spoilers, and flaps. Below are some aircraft parts that may generate noise.



NOVEMBER *Arrivals and Departures*



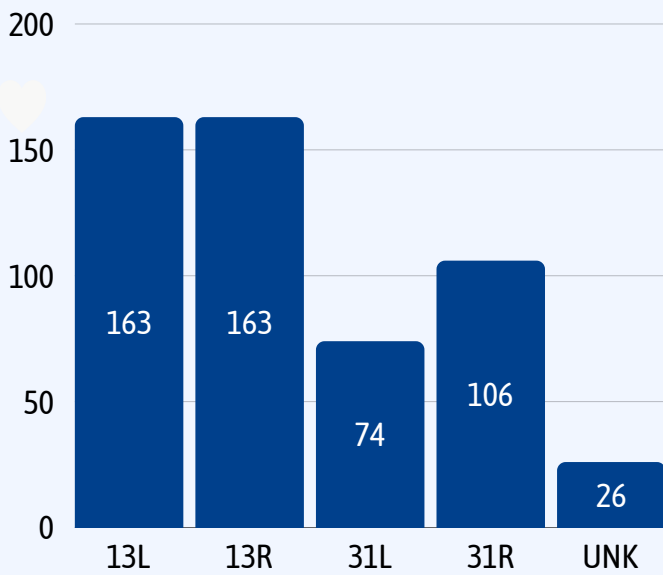
ARRIVALS PER RUNWAY



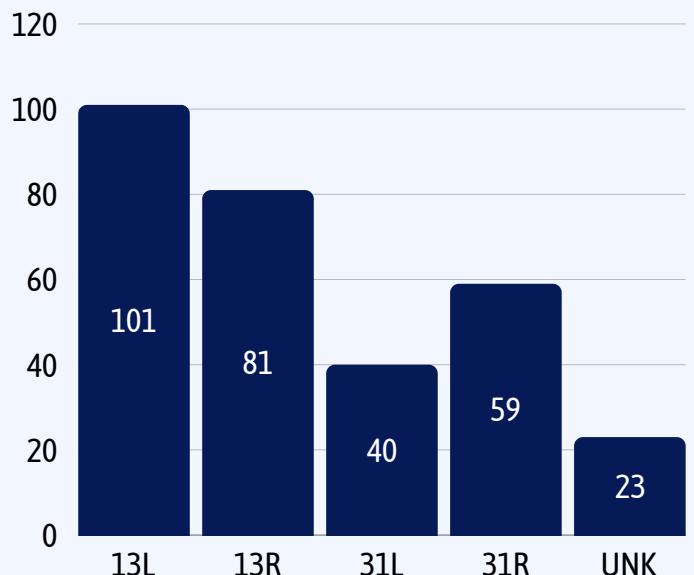
DEPARTURES PER RUNWAY



11:00 P.M. - 6:00 A.M. OPERATIONS



ARRIVALS PER RUNWAY



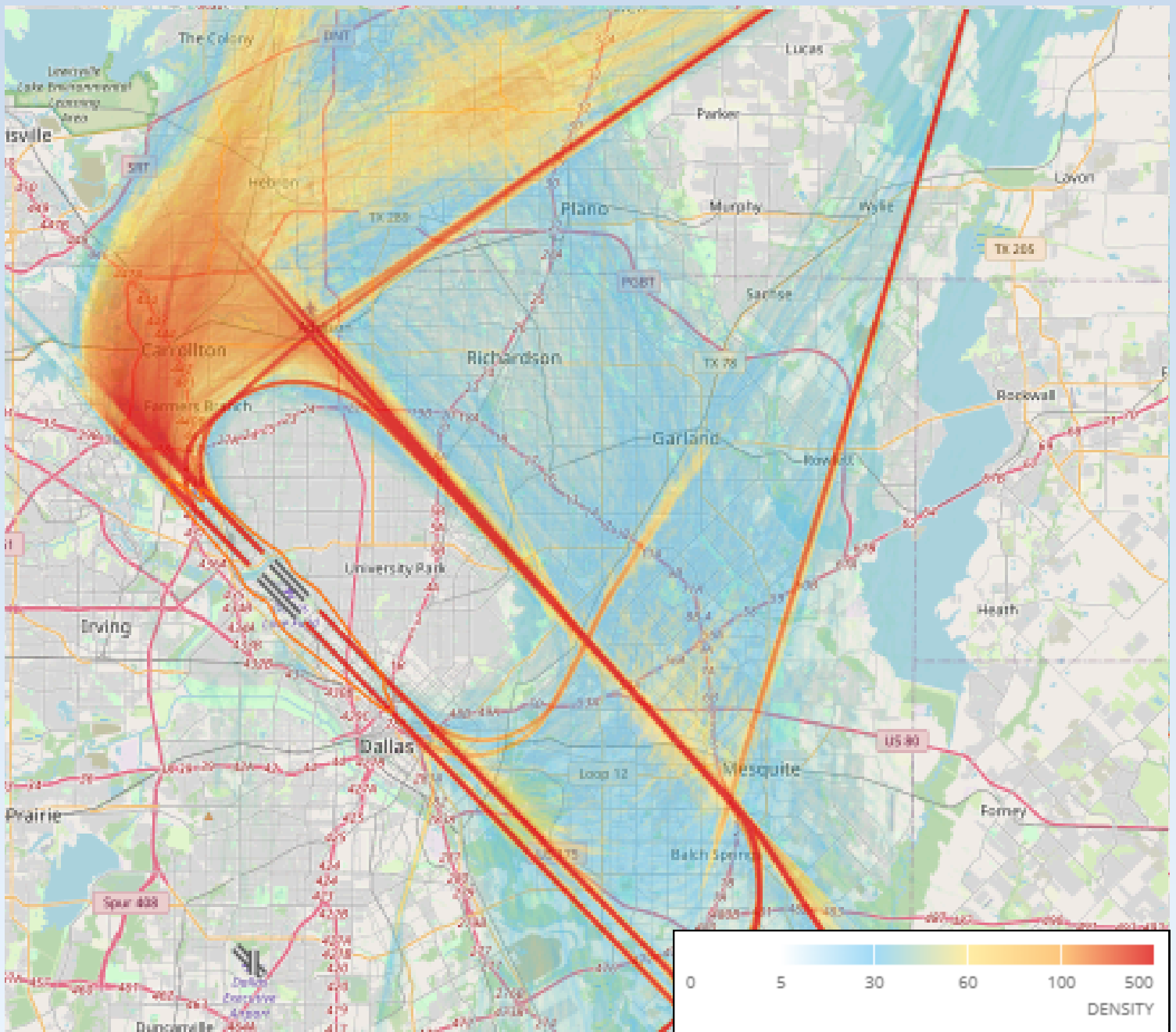
DEPARTURES PER RUNWAY

Data is from Casper Noise (<https://dal.casper.aero/>)

FLIGHT TRACK DENSITY MAP

NOVEMBER ARRIVALS

The following map takes all arrival flight track data for the month and creates the radar density map. Dark red in the middle of the picture shows the highest density of flight tracks over the runways. The colors gradually move out to blue as the least dense.



Data is from Casper Noise (<https://dal.casper.aero/>)

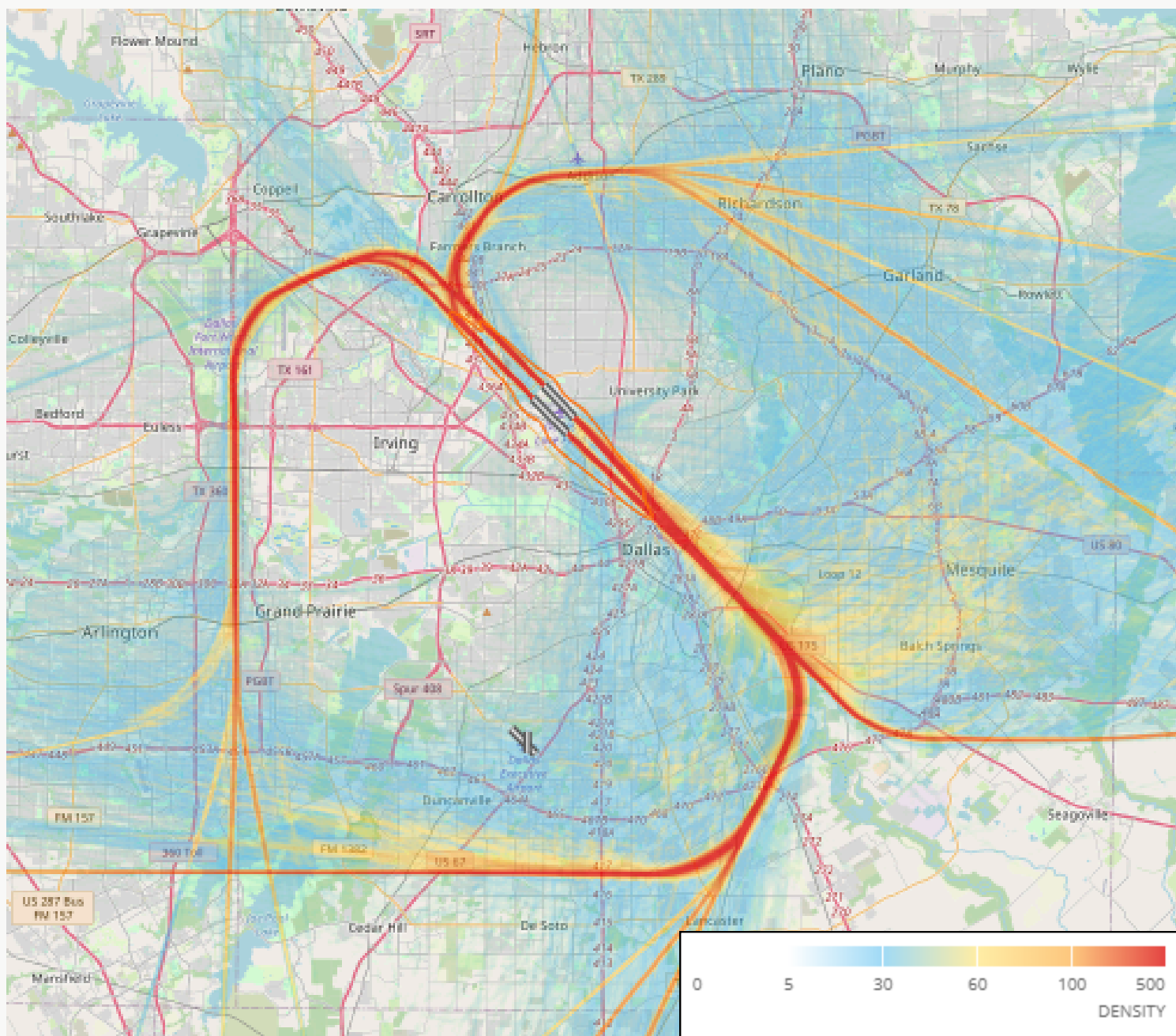
Dallas Love Field Monthly Noise Dynamics

November 2025

FLIGHT TRACK DENSITY *MAP*

NOVEMBER DEPARTURES

The following map takes all departure flight track data for the month and creates the radar density map. Dark red in the middle of the picture shows the highest density of flight tracks over the runways. The colors gradually move out to blue as the least dense.



Data is from Casper Noise (<https://dal.casper.aero/>)

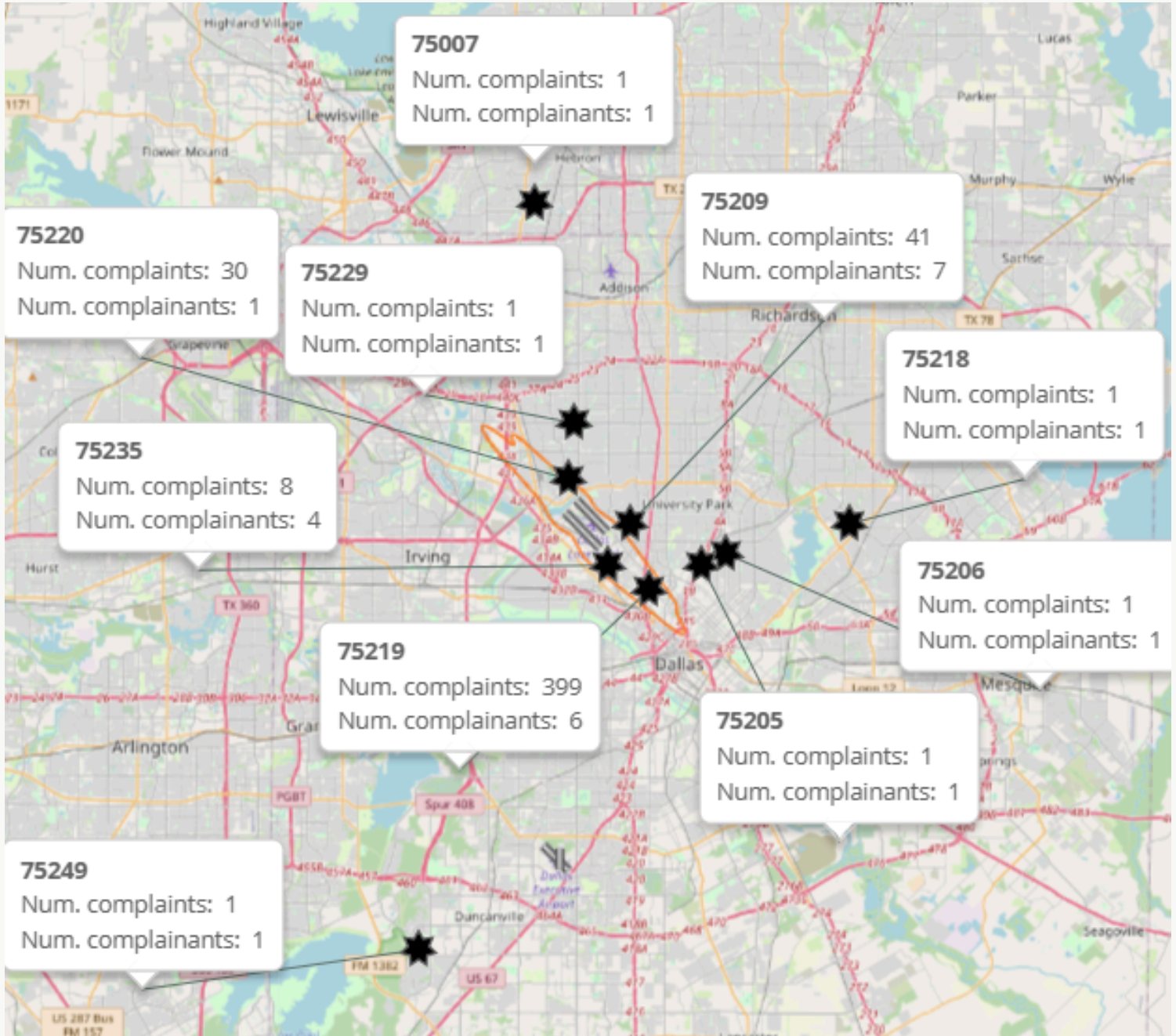
Dallas Love Field Monthly Noise Dynamics

November 2025

NOVEMBER

NUMBER OF COMPLAINTS BY ZIP CODE

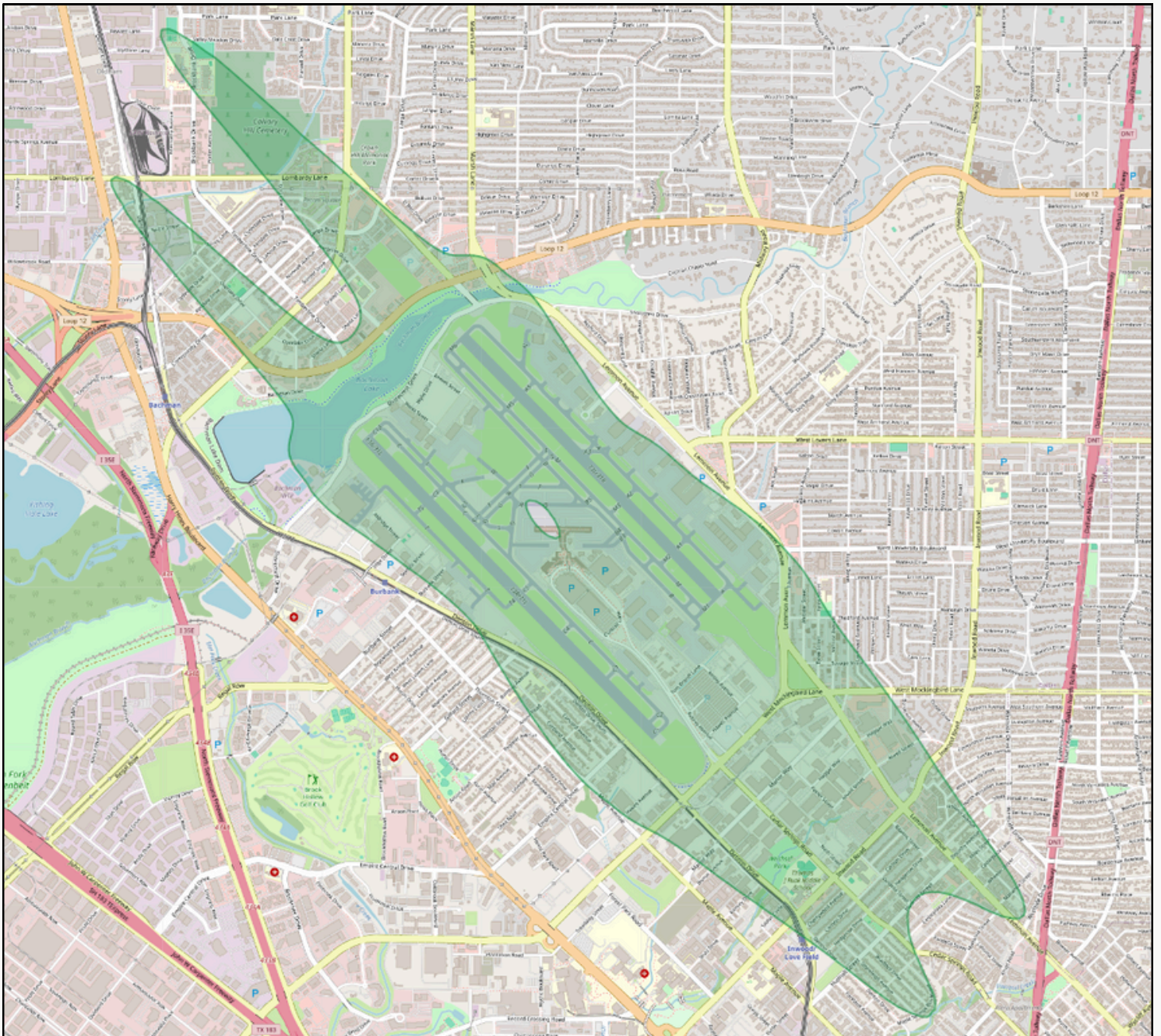
The map below displays the number of complaints and complainants for zip codes in the immediate Dallas Love Field area.



Data is from Casper Noise (<https://dal.casper.aero/>)

2023 DAY-NIGHT AVERAGE SOUND LEVEL (DNL) CONTOUR MAP

DNL is a metric that reflects a person's cumulative exposure to sound over a 24-hour period, expressed as the noise level for the average day of the year on the basis of annual aircraft operations. Below is a map of the 2023 65 dB contour map for DAL. The 2023 Contour Report can be found [here](#).



SCHEDULED RUNWAY CLOSURES

Closed for General Maintenance

RUNWAY 13L/31R (LEMMON) CLOSURES

Tuesday, Dec 9th - Wednesday, Dec 10th: 11:00 p.m. - 6:00 a.m.

Wednesday, Dec 10th - Thursday, Dec 11th: 11:00 p.m. - 6:00 a.m.

Tuesday, Dec 16th - Wednesday, Dec 17th: 11:00 p.m. - 6:00 a.m.

RUNWAY 13R/31L (DENTON) CLOSURES

Thursday, Dec 4th - Friday, Dec 5th: 11:00 p.m. - 6:00 a.m.

Thursday, Dec 11th - Friday, Dec 12th: 11:00 p.m. - 6:00 a.m.

Wednesday, Dec 17th - Thursday, Dec 18th: 11:00 p.m. - 6:00 a.m.

Stay updated on runway closures by clicking [here](#).

** Please see the airport diagram on the next page for locations of runways*

NOVEMBER TRAFFIC *MIX*

Below are the top aircraft that utilize DAL this month .

Boeing 737-700(B737)



Boeing 737-8 MAX (B38M)



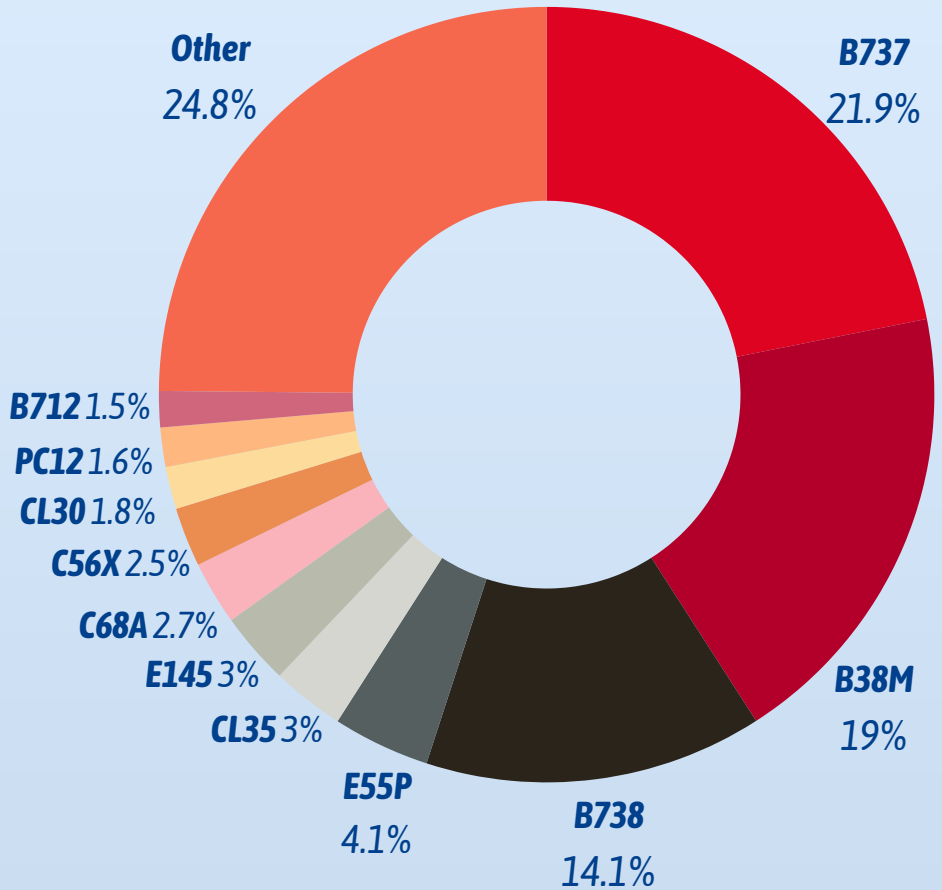
Boeing 737-800 (B738)



Embraer Phenom 300 (E55P)



Bombardier Challenger 350 (CL35)



♥ Aircraft are categorized by “stages,” based on noise level by the Federal Aviation Administration (FAA) and International Civil Aviation Organization (ICAO) noise standards. Stages range from 1-5 for jet and large turboprop aircraft, Stage 5 being the quietest. Helicopters noise Stages range from 1-3.

AIRCRAFT NOISE STAGES AT DAL



Data is from Casper Noise (<https://dal.casper.aero/>)

HOW TO REACH DAL

*In an effort to serve you better, Dallas Love Field has opened the Airport Operation Center (AOC) for your use. The AOC is staffed 24 hours per day to direct your **airport-related concerns**. Please call the AOC at **214-6701-LOVE (5683)**.*

*If you have any **noise-related inquiries**. Please call **214-671-8096**.*

*If you have any **inquiries not related to noise**. Please call **311** or file a request online [here](#).*



*Translated copies of this newsletter are available upon request.
Las copias traducidas de este boletín están disponibles bajo petición a solicitud.*

